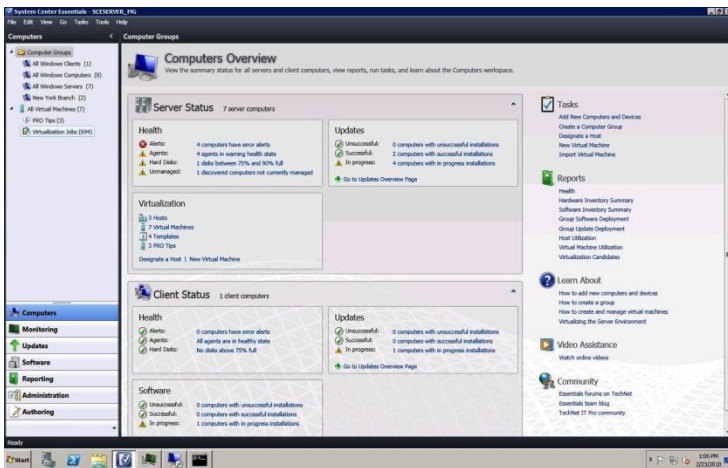




Microsoft® System Center Essentials 2010

Proactive IT management designed for midsize businesses

Microsoft® System Center Essentials 2010 (Essentials 2010) is a new management solution in the System Center family of IT systems management products specifically designed for midsize businesses with up to 50 Servers and 500 Clients. Essentials 2010 provides a unified management solution that enables IT professionals in midsize organizations to proactively manage their IT environment with increased efficiency.



Key Features

- Simple Installation and setup
- Comprehensive Monitoring
- Update Management
- Software Deployment
- Integrated Reporting
- Software and Hardware Inventory

Key Benefits

Unified Experience

Essentials 2010 provides a single solution with a single console for managing your servers, clients, hardware, software, and IT services for a unified experience.

Single Solution

- Unified reporting based on the SQL Server™ 2008 reporting engine is provided to help you easily run, review, save, print or email information about the status of your IT environment.
- Expert knowledge is provided for managing your important platforms, applications and workloads. This knowledge includes support and diagnostic information for Server® and Client

operating systems, Active Directory®, the Microsoft Office system, Exchange, SQL Server™, and IIS.

Single Console

- Essentials 2010 provides comprehensive management from one console for physical and virtual servers, clients, hardware, software, and IT services running in your IT environment.
- Using the same console from which you monitor your IT environment, you can assess, configure and distribute updates, plus install software to groups and users you want to target.
- Single screen overview pages provide summary information, common tasks, alerts and reports, allowing you to quickly see all the aspects of management for your IT environment. From these pages, you can quickly drill down to get information to fix issues you might have.

Proactive Management

Essentials 2010 enables you to proactively manage your IT environment, keeping your system up-to-date with tools that accelerate problem resolution and enable automation of system updates and data.

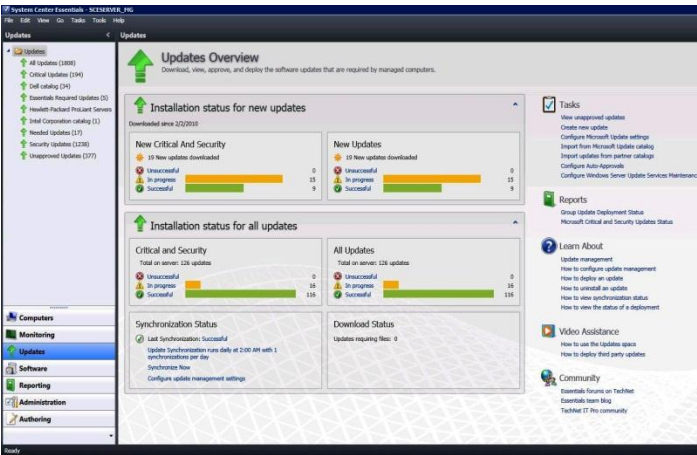
Accelerates troubleshooting and problem resolution

- Essentials 2010 can alert you to performance problems or when updates are required for your IT environment. Receive instant notification of IT problems via Email, pager, or SMS text message so you can quickly troubleshoot and keep your IT environment up and running.
- Solve problems using integrated troubleshooting and resolution for clients, servers and IT services running in your IT environment. You get definitive information right in the console that will help you prevent and solve problems with your IT resources. In-line links are also provided to click and “fix it now.”

Automates system updates and data collection

- Quickly and correctly set the initial update configuration for your IT environment. Once configured, you can manually or automatically deploy updates for Microsoft operating systems, hardware updates, third-party updates, drivers and Microsoft and non-Microsoft software applications to ensure the security of your IT environment.
- Essentials 2010 automatically checks for new updates available and applicable to your IT environment and provides notification and access reports on update deployment progress to help you quickly troubleshoot any update deployment issues.

- Essentials 2010 automates the collection of software and hardware inventory so you can review assets to help achieve optimum configuration and compliance.



Increased Efficiency

System Center Essentials 2010 is easy to deploy and maintain helping simplify complex management tasks for increased efficiency.

Simple to Use

- A simple wizard quickly walks you through the process of software deployment to clients and servers in your network. You can deploy MSI and non-MSI applications, drivers, Microsoft and non-Microsoft QFEs, even Office 2010.
- You can add monitoring without being an expert by using provided templates. For example, using the provided wizard you can create monitoring for your website, a database or file share.

Simple to Deploy and Maintain

- Using a simple installation wizard to install all Essentials 2010 product components and prerequisites, you can get up and running quickly.
- The initial discovery wizard allows you to easily identify and select the computers and devices on your network to be managed. When new devices are added to your network, they are also automatically discovered.

In response to customer requests and other feedback from Essentials 2010 users, new features and enhancements have been added in this release.

- Integrated virtualization server creation and management
- Easy machine conversions from physical-to-virtual
- Intelligent placement of virtual workloads
- Auto-Manage Updates & Deadline
- Software Distribution Targeting
- Dynamic Computer Grouping

Requirements and Specifications Management Server Operating System

- Microsoft® Windows Server 2008 R2 Standard or Enterprise Edition, X64
- Windows Server 2008 Standard or Enterprise Edition with Hyper-V, x86 or x64 (x64 required for virtualization management)
- Windows Server 2008 Standard or Enterprise Edition without Hyper-V, x86 or x64 (x64 required for virtualization management)
- Windows Server 2003 Standard or Enterprise Edition, x86 or x64, with Service Pack 2 (SP2) or later
- Windows Small Business Server 2008, x64 only
- Windows Essentials Business Server 2008, x64 only

Management Server Hardware

- 20 GB of free disk space (150 GB to for virtualization management)
- CPU is x86 or x64-based, at least 2.8 GHz
- 4 GB of RAM

Other Prerequisites

To use the Essentials console only: 2.8 GHz processor or better; 1 GB of RAM or more; 512 MB of available hard drive space
For detailed requirements, see Essentials 2010 technical documentation at: <http://technet.microsoft.com>

To learn more about System Center Essentials 2010 visit:
<http://www.microsoft.com/sce>

© 2010 Microsoft Corporation. All rights reserved. The information contained in this document represents the current view of Microsoft Corporation on the issues discussed as of the date of publication. Because Microsoft must respond to changing market conditions, it should not be interpreted to be a commitment on the part of Microsoft, and Microsoft cannot guarantee the accuracy of any information presented after the date of publication. The information represents the product at the time this document was printed and should be used for planning purposes only. Information subject to change at any time without prior notice. This data sheet is for informational purposes only. MICROSOFT MAKES NO WARRANTIES, EXPRESS OR IMPLIED, IN THIS SUMMARY.

Microsoft, Active Directory, Windows, the Windows logo, and Windows Server System are either registered trademarks or trademarks of Microsoft Corporation in the United States and/or other countries.

All other trademarks are property of their respective owners.

Place Part Number here.

Microsoft